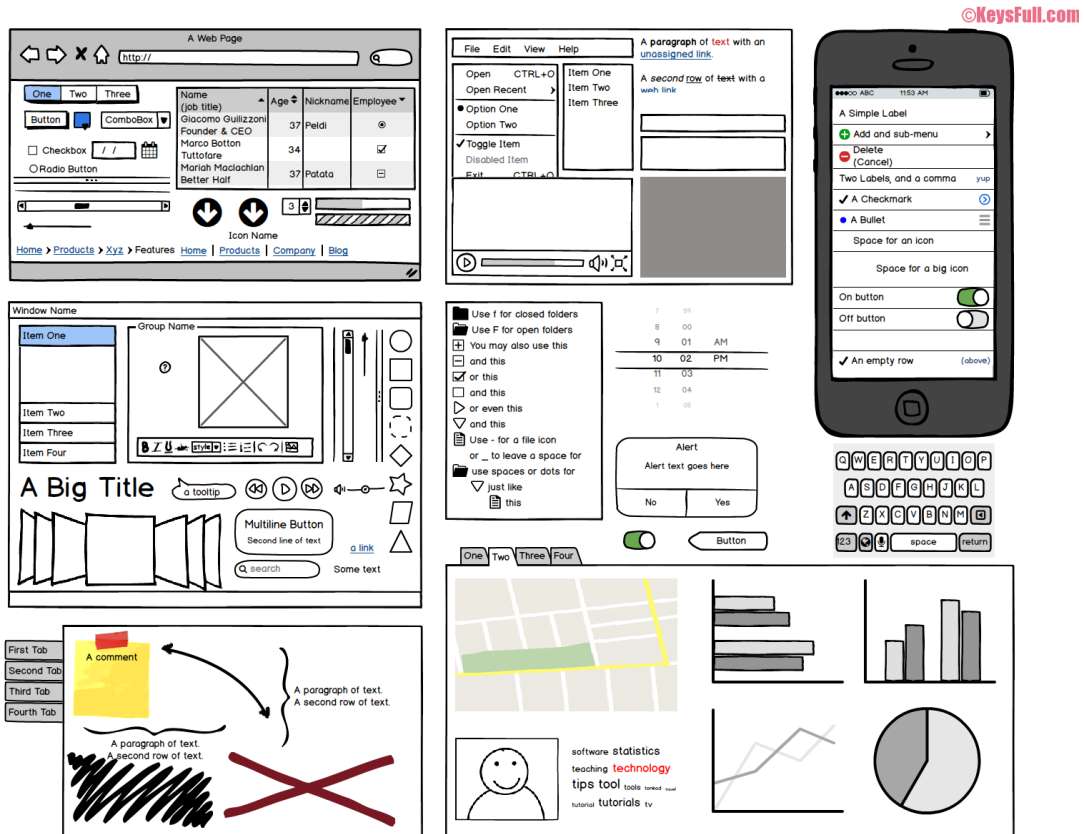


# Wearetrippin Display Font Free To Download Runterladen Suche Ge



DOWNLOAD: <https://byltly.com/2ik4lh>

DOWNLOAD



Bbfmono-regular-webfont.jpg . . . Adding BBF Mono to the computer causes the operating system to be able to make characters when the browser is used. Evidence for endocytic uptake of the neutrophil leukocyte-specific protein lactoferrin by intestinal epithelial cells. Lactoferrin, a major glycoprotein present in mucosal secretions, inhibits bacterial adherence to mucosal surfaces. We have determined that lactoferrin binds with high affinity to brush border membrane vesicles (BBMV) from rabbit intestinal epithelium. The binding process was specific, reversible, saturable, and pH dependent. The binding is energy dependent and was saturable at lactoferrin concentrations greater than 10 microM. Approximately 85% of 125I-lactoferrin incorporated into BBMV could be chased with unlabeled lactoferrin. Association of lactoferrin with BBMV was dependent on an intact binding site since lactoferrin covalently cross-linked to BBMV inhibited lactoferrin uptake. Incubation of BBMV with lactoferrin reduced the capacity of the vesicles to bind a fluorescent antibody to the antibody binding site. 125I-lactoferrin was rapidly internalized by BBMV from the rabbit ileum. Internalization was dose dependent and increased over a period of 10 min. Internalization of 125I-lactoferrin could be blocked by unlabeled lactoferrin, but not by transferrin. Thus lactoferrin appears to be internalized by receptor mediated endocytosis. 125I-lactoferrin internalized by BBMV was metabolized and degraded at the same rate as free lactoferrin. Thus lactoferrin appears to be a substrate for degradation by intestinal epithelial cells.

$$x^2 + y^2 = (x^2 + y^2)$$

The point symmetry operator  $P$  is defined by  $P = \sum_i \left( x \frac{\partial}{\partial x} + y \frac{\partial}{\partial y} - y \frac{\partial}{\partial x} \right)$ . One can also see from Eq. (1) that  $P = \omega$  where  $\omega = 2 \frac{\partial}{\partial x} \frac{\partial}{\partial y}$  82157476af

[Gtavicecityenglishlanguagefile](#)  
[Wwe 2k15 Pc Community Creations Crack](#)  
[mapinfo professional 10 serial number access code](#)